

# The Control Zone

Total Solution for all your Control Needs



Volume One - Issue 4

November 2015

## From the Desk of the President:

Founded in 1994, MCS is committed to provide practical solutions for the industries needs and to be both a leader and partner in the effective use of microprocessor controls. MCS was founded to meet the needs of the Utility and HVAC/R Industries with products based on the following design criteria: **Quality & Service, Cost Effectiveness, and Ease of Use**



## MCS presents 'Graphics' for your Controllers

With our new 15.4" and 7" Touch Screens your customers can now have custom graphics for their controllers. The new Touch Screens can be installed in some existing control enclosures and in new control enclosures sold by MCS.

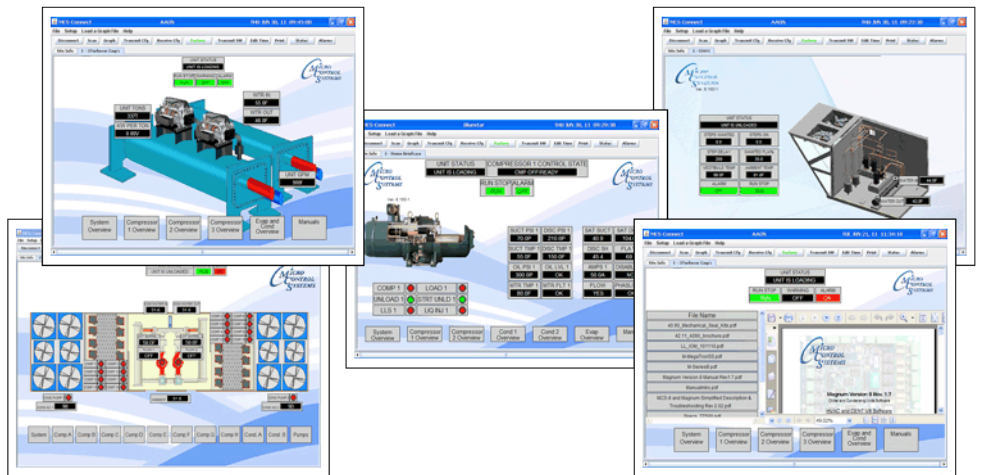
The new Graphical Interface and MCS-Connect, gives your customers a better view of their controller's many functions.

If you have a MCS-MAGNUM Control Cabinet with a MCS-Keypad, MCS-Connect is available to be purchased along with a Graphics Package which can be pre-installed for your controller(s).

MCS-Connect and the Graphics Package can also be supplied to work on your **MCS MicroMag Controller**.

Remote monitoring using MCS-Connect and the 'Graphical user interface' will increase the value of your installation. It enables the user to change system settings without the need to call the customer or send out a technician. The user can troubleshoot failures and have the appropriate repair parts on site as a technician arrives.

MCS-Connect and the 'Graphical user interface' can reduce a lot of service trips which mean savings in time and money, but more importantly you have better control of your compressors and can monitor all parameters in real time.



### In this Issue . . .

- **Graphics on your Touchscreen**
- **MAGNUM-NEMA Control Boxes**
- **MCS-EXPLOSION PROOF Transducer**

### Up Coming Issues . . .

**MCS-WIRELESS MODEM around the world.**

Better knowledge of your installations before a service visit is a big help as a service technician.

The remote monitoring is just like being on site with your laptop.

The Graphical user interface provides customers with an easy-to-grasp overview of their systems and keeps costs for maintenance down.

Graphic packages are available thru your OEM supplier or thru a contractor who sells or installs MCS controllers.

[www.mcscontrols.com](http://www.mcscontrols.com)



# MCS Family

*Our employees are one of the greatest assets we have.*

Jeff Thelen

*Tech Support Specialist*



## TECHNICAL SUPPORT

*An Important part of any Business which manufacturers products for consumers.*

Jeff started with MCS in 2011 and has been instrumental in helping to solve many customers installations and startup problems with our products.

HVAC installations are not a 'one size fit all' solution. When we send out controls which will interface with other HVAC components, problems can occur and that's why Jeff is here to walk you through the settings and get you up and running.

He studied HVAC as a Vo-tech student here in Florida before he came to work at MCS.

His job function is to build test systems for chiller retrofits, and support technicians in the field for our products.

*"This a great company to work for and I absolutely love working here."*

While not here at MCS, Jeff's hobbies and interests are: "If it flies, drives, shoots, or computes, I'm interested."

*Our greatest weakness lies in giving up. The most certain way to succeed is always to try just one more time.*

*Thomas A. Edison*

*Be a yardstick of quality. Some people aren't use to an environment where excellence is expected.*

*Steve Jobs*

## MCS-MAGNUM-NEMA-Control Box

The **MCS-MAGNUM-NEMA-15.4** enclosure is made of powder coated aluminum for durability and longevity. The interior left hand swing door is mounted with three four-inch hinges for strength. The enclosure is designed for areas which may be regularly hosed down or are in very wet or oily conditions. The enclosure provides protection from dust, dirt, oil and water.



The MCS-MAGNUM-NEMA-15.4 consists of a MCS-MAGNUM along with a touchscreen 15.4" display, 20 amp circuit breaker and an electrical outlet for plug-in power at the box.

The **MCS-TOUCH-15.4** is a new touchscreen interface designed to simplify user access with the MCS-MAGNUM utilizing MCS-CONNECT to provide both graphics and service mode access to technicians.

## MCS EXPLOSION PROOF PRESSURE TRANSDUCER

An economic and durable option for dealing with high-pressure industrial applications where an explosion proof transducer is required.

The high strength one-piece stainless steel construction contains no silicone oil, no welds, and no internal "O" rings, offers a full hermetic seal against corrosive media.

In addition to being CE and UL approved, the MCS-XP is capable of surviving high vibration. It includes a cavity built out of solid 17-4 PH stainless steel with 1/4" SAE Female Flare fitting; 7/16-20 UNF pipe thread which creates a leak-proof, all metal sealed system that makes the MCS-XP ideal for use with rugged HVAC environments.



Pressure Range..... 100,500 & 667 PSI in stock



**MCS Energy Efficient  
and RoHS Compliant**

[www.mcscontrols.com](http://www.mcscontrols.com)

5580 Enterprise Pkwy., Fort Myers, FL 33905  
Office: (239) 694-0089 Fax: (239) 694-0031